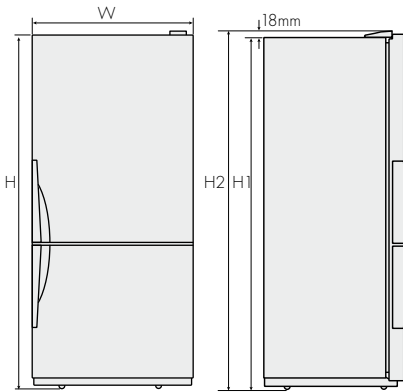


BOTTOM MOUNT MODELS:

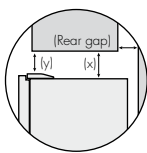
WBE5100SC, WBM5104SC, WBM5100WC, WBE4300SB, WBM4304SB, WBM4300WB, WBM3700SB, WBM3700WB



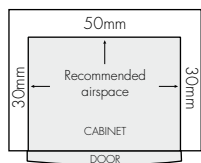
model	max door height (H)	cabinet height (H1)	total height (H2)	door width (W)	cabinet width (W1)	total depth (D)	cabinet depth (D1)	depth door open (D2)
WBE5100SC, WBM5100WC	1714	1702	1720	803	790	709	612	1450
WBM5104SC	1714	1702	1720	803	790	725	612	1450
WBE4300SB, WBM4300PB, WBM4300WB	1714	1702	1720	703	690	709	612	1350
WBM4304SB	1714	1702	1720	703	690	725	612	1350
WBM3700SB, WBM3700WB	1614	1602	1620	652	640	709	612	1269

RECOMMENDED AIRSPACE:

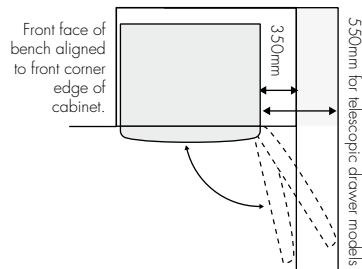
for all models



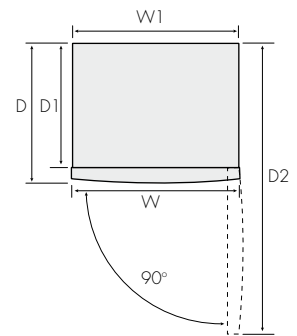
If you do not have a cupboard with a rear gap, the recommended clearance on top increases from 50mm to 90mm (x) and 32mm to 72mm (y).



Please note: Doors are designed to sit proud of cabinetry (not flush).



When positioned in a corner area, spacing of at least 350mm on the fridge side will allow the doors to open enough to enable the removal of the crisper bins and shelves. This required clearance increases to 550mm for those models with telescopic extension slide-out bins.



*For those top mount and bottom mount models with telescopic extension slide-out bins or crispers

being placed in location with the door opening against the wall, clearance requirement increases from 350mm to 550mm.

For information on installation of integration kits for top mounts, bottom mounts and pigeon pair models, please refer to www.westinghouse.com.au